



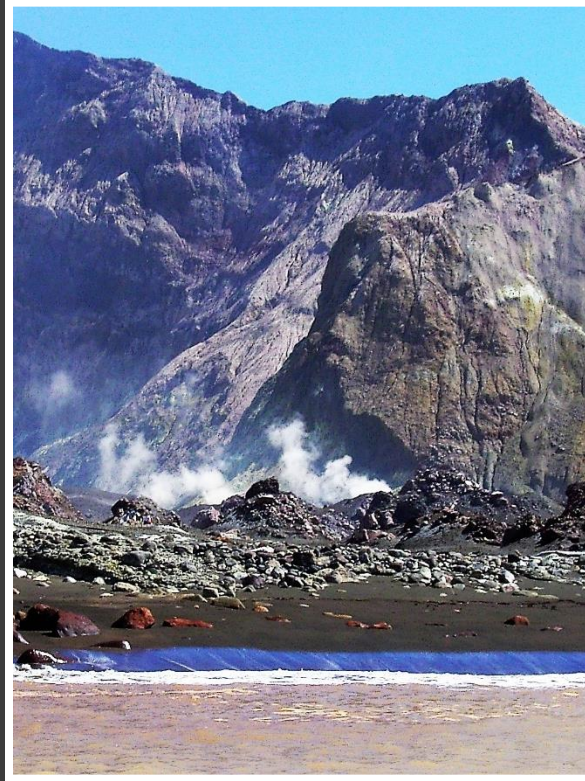
MEL'S WHITE ISLAND NZ PHOTO ALBUM

On Feb 9th, 2005, Janet, Allen, and Mel visited New Zealand's Most Active Volcano, Whakaari/White Island.

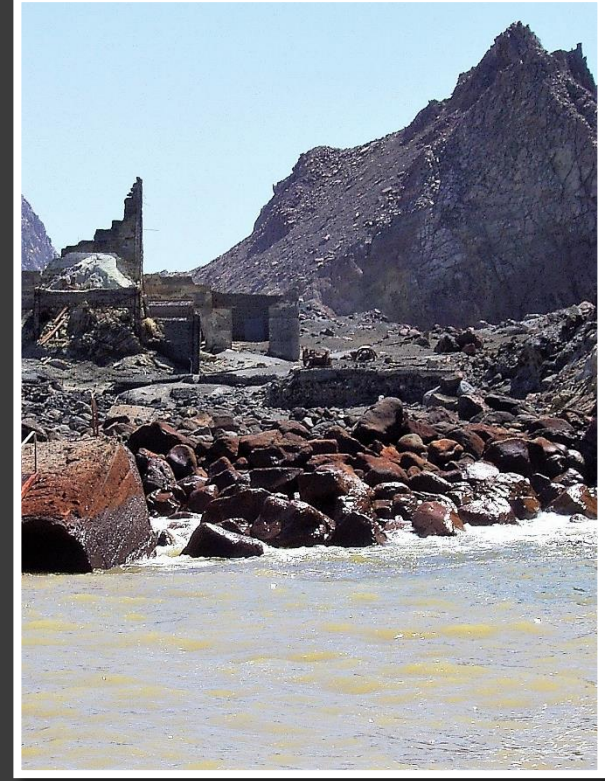
Whakaari / White Island is an active andesite stratovolcano, situated 48 km from the east coast of the North Island of New Zealand, in the Bay of Plenty. Eruptions in recent history have been irregular and mostly minor, but they persist with the last one occurring in 2016.



We circled the island first. Note the green patch.



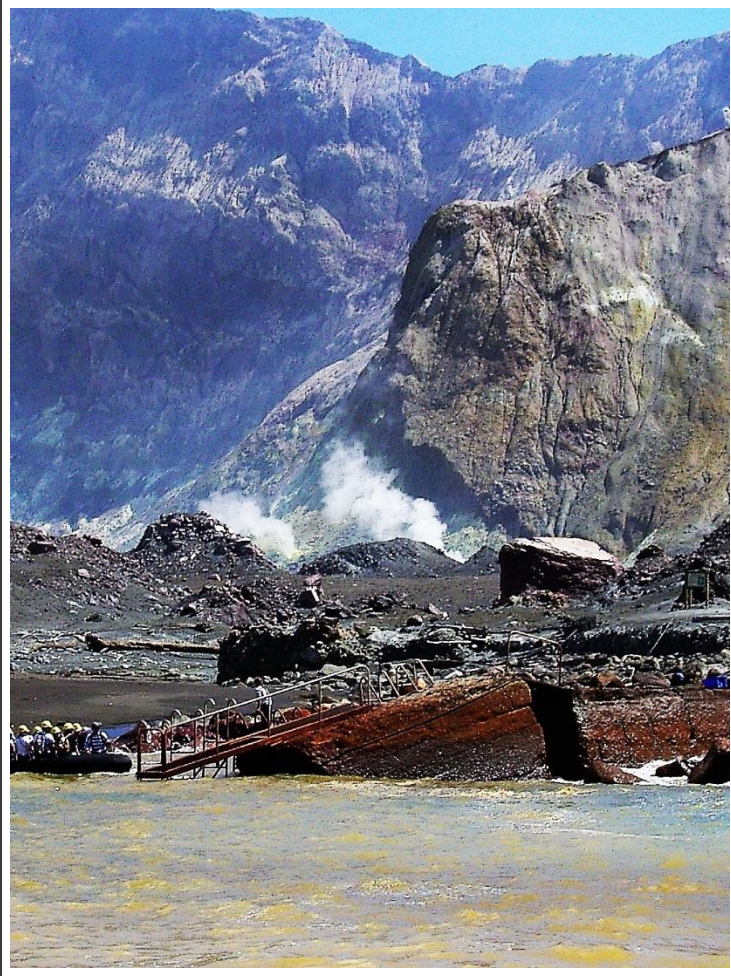
Note the colour of the water...



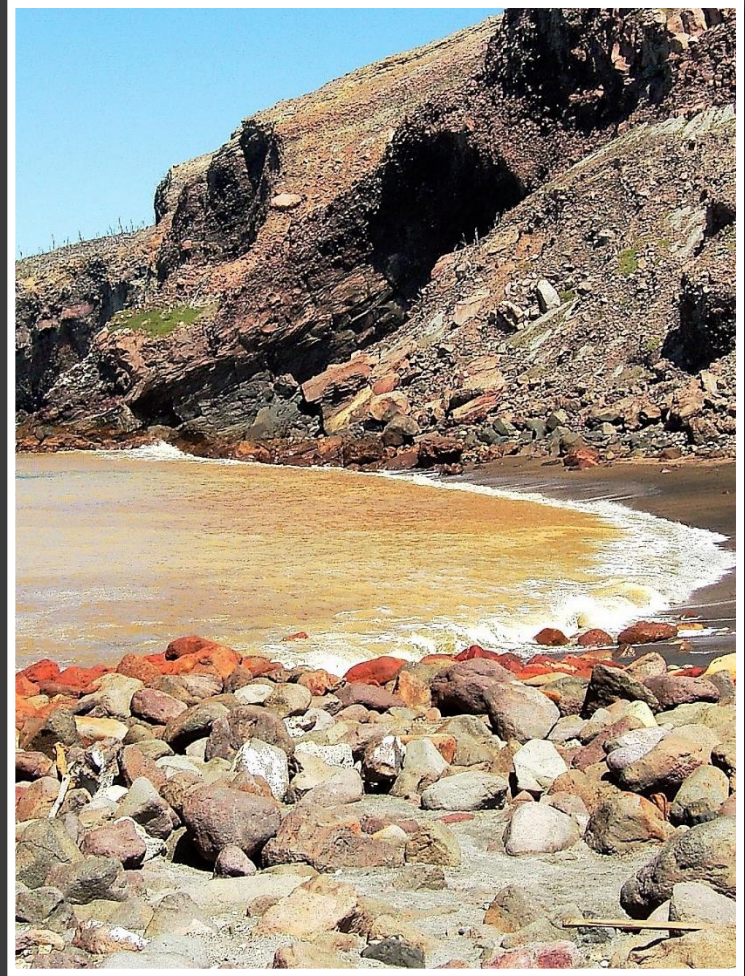
Ruins of the second attempt to mine sulphur on the island in the early 1900s.



Landing on the island was made via a rubber dingy.



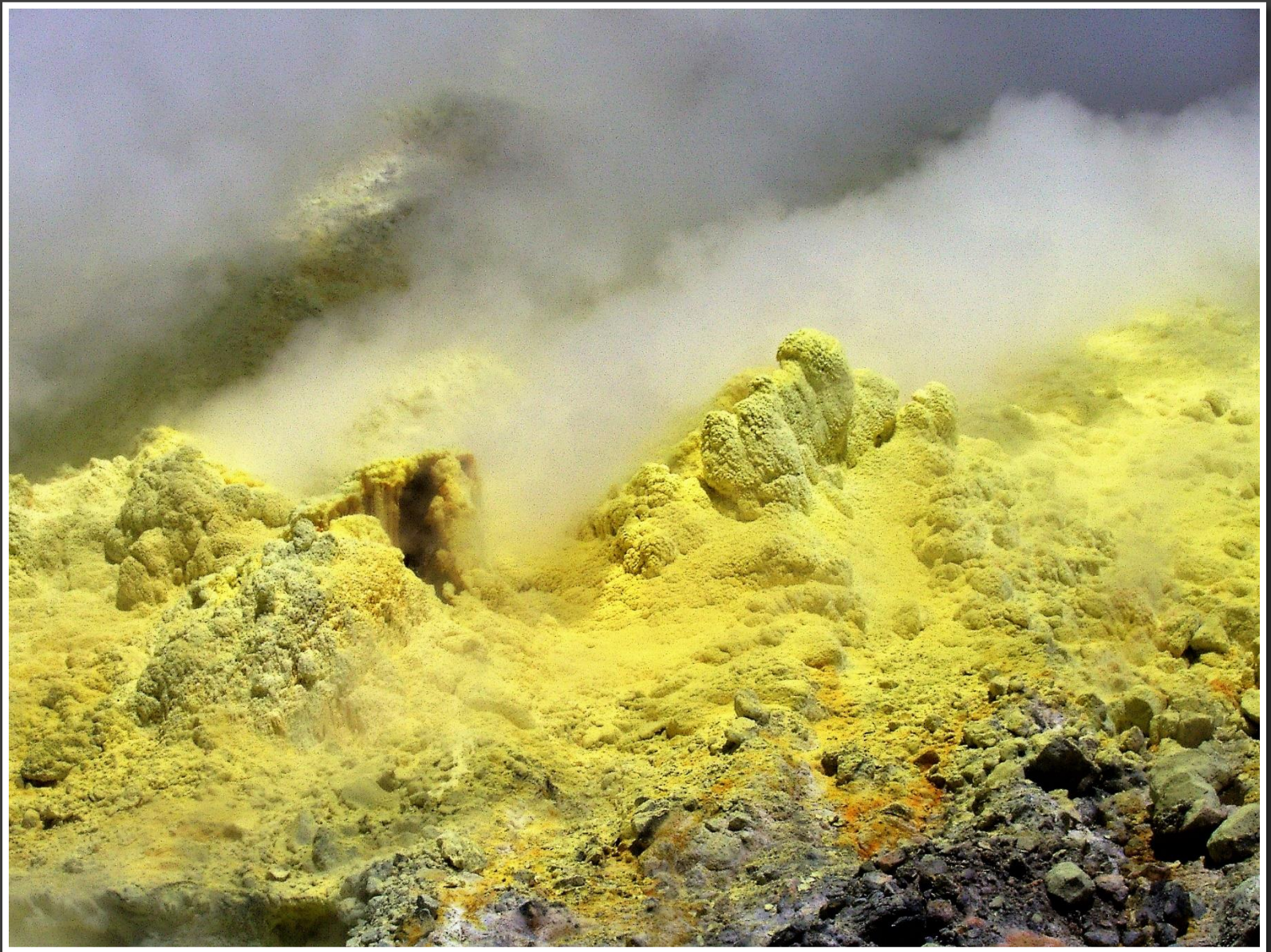
Landing was still a bit rough as the dingy moved around a lot in the waves.



Natural pollution.







Sulphur fumarole.

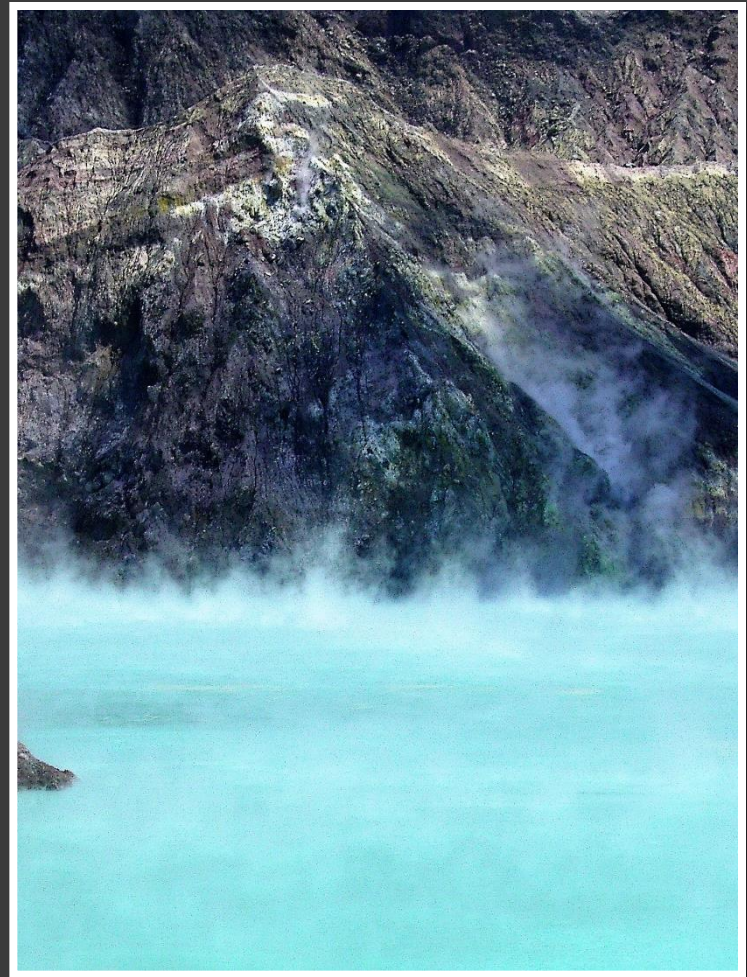




Sulphur Crystals.



Heading toward a small lake.



Hot, acid lake.



Hot, acid lake.



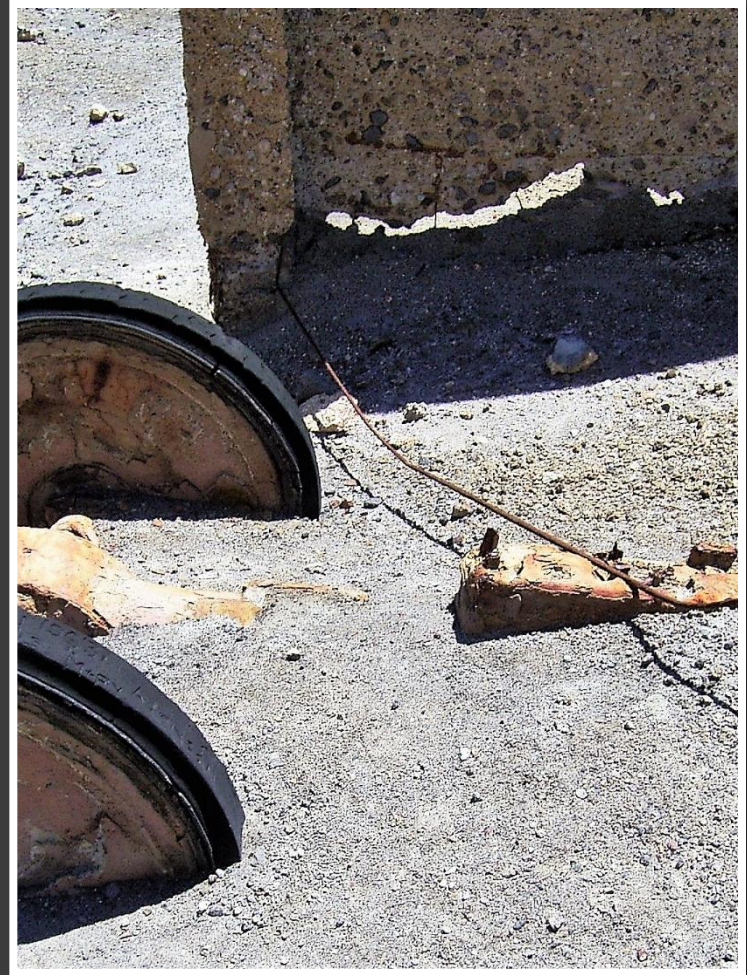
Hot, acid lake.



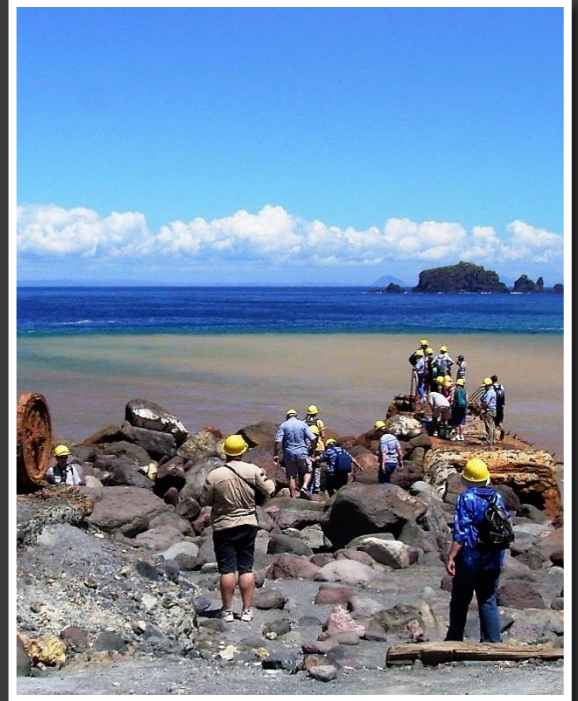
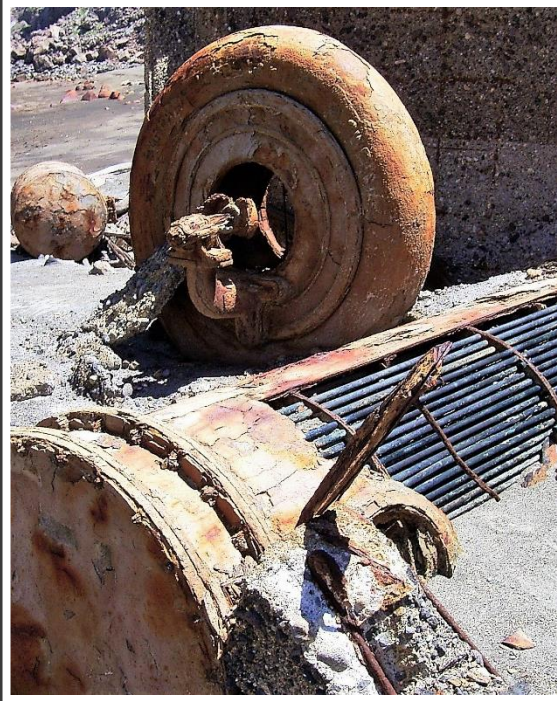




Allen videoing the ruins of the sulphur mine.



Remains of a tractor.







The End